



ISPO AWARD
GOLD WINNER
2016/2017



CEE | COACH®

smartly connected

(GB) P 02 - 15

(D) S 16 - 29

(F) P 30 - 43

Manual / Bedienungsanleitung / Mode d'emploi

ceecoach - M - 07



Table of contents

- P 03 Explanation of symbols
- P 04 Illustrated device overview
- P 05 Before getting started
- P 06 Assigning roles (pairing)
- P 07 - 08 Possible connection modes
- P 09 Key Lock, Mute Moderator
- P 10 Connection with Bluetooth Accessories
(e.g. Headset)
- P 11 Function tables (short overview), range,
setting the volume & resetting
- P 12 Technical features and update function
- P 13 Information on usage, protection,
radio communication
- P 14 - 15 Battery maintenance, disposal &
currentness

Please contact your distributor for any questions and warranty issues:

Purchased on: _____

At: _____

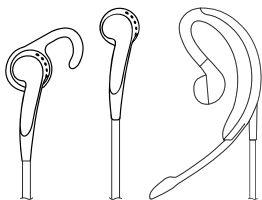
Use at your own risk!

Information regarding certification is provided on the additional information sheet.

Scope of delivery

see package

* If applicable, please observe the instructions of the separately delivered headset. You can also make use of your own headset.



Configuration for headsets

Please make sure that CEECOACH configuration is correct for your headsets. You can check and change that in the installer. Please take note of the guide for the installer on our homepage. When using mono headsets (e.g. Jabra wave) on CEECOACH with stereo configuration (delivery standard since Dec 2016) you might experience echoes. When using stereo headsets (e.g. Jabra Chill) on CEECOACH with mono configuration you will only have audio on one ear.

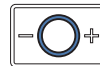
Explanation of symbols

The light ring around the Talk button (o) indicates the operating modes. The ring can be illuminated in various colors (green, blue, red, yellow, white and purple), continuously and flashing.

Examples:



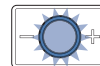
Light
off



Continuous
light

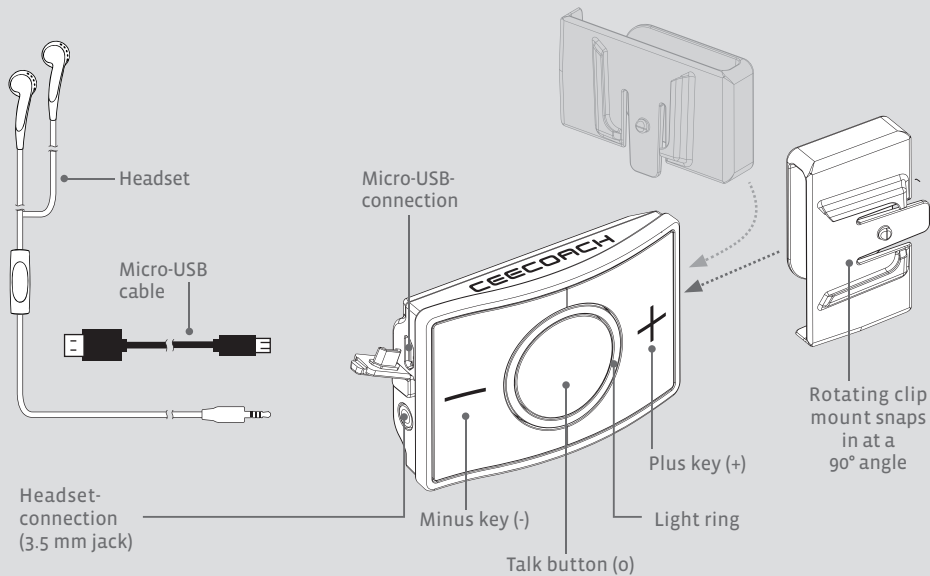


Slow
flashing



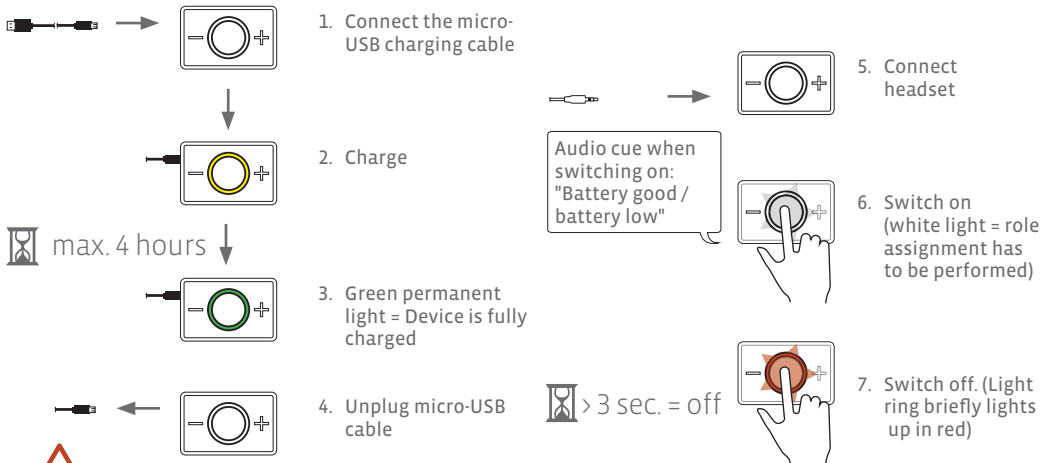
Fast
flashing

Device overview



Before getting started

Depending on the status of the battery, the device is fully charged in max. 4 hours, once the continuous yellow light has switched to green. For charging: Plug the included charging cable into the micro-USB connection and connect it to the included power supply or a computer.



All CEECOACH functions are only available after removing the USB plug!

Role assignment (pairing)

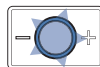
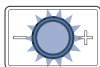
The devices have not been assigned roles upon delivery (all devices are identical). This is done when the devices are switched on for the first time. If you wish to switch on the devices without changing the predefined role assignments, press the Talk button (o) for one second. Role assignment only needs to be performed once when switched on for the first time. If you would like to change the role of a device, you can repeat the process at any time (following a reset). If you would like to increase the number of participants, the connected devices have to be reset first.

Assigning the moderator

To do so, after switching on the prospective moderator, please press the Plus button (+) and the Talk button (o) simultaneously for 2 seconds.



 2 sec. (o) & (+)



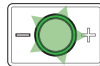
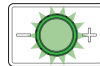
Ready for use and/or maximum number of participants found, after approx. 30 sec., when flashing slowly.

Assigning participants

To assign the role of the participant to the device, switch on and press the Minus button (-) and the Talk button (o) simultaneously for 2 seconds.

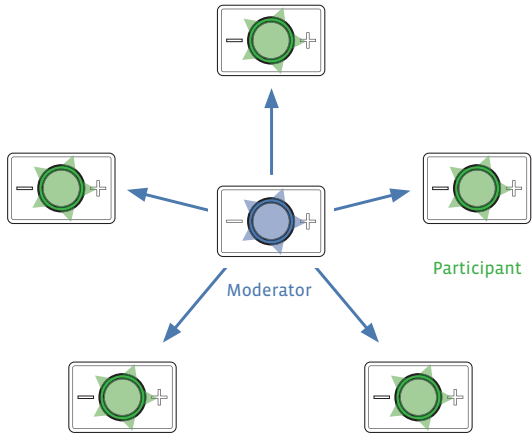


 2 sec. (o) & (-)



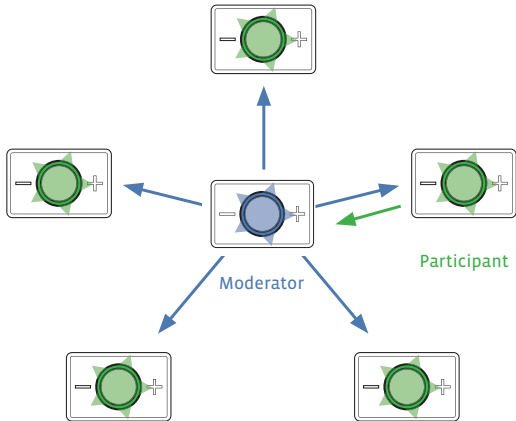
Ready for use after approx. 30 sec., indicated by slow flashing.

Connection modes: 1st Moderator Mode

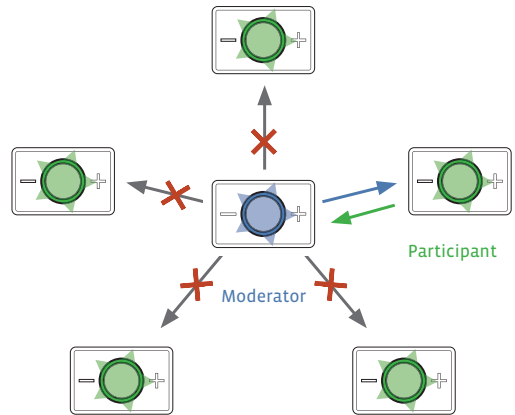


The moderator speaks – up to 5 participants listen. This connection is already established after role assignment, without the moderator having to press the Talk button (o).

Connection modes: 2nd Participant Mode Connection modes: 3rd Private Mode



Participant and moderator can speak to one another; all other participants can only eavesdrop. Voice communication with the moderator is established when the participant briefly presses the Talk button (o) 1 time. The conversation is stopped by the moderator by double clicking the Talk button (o).



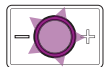
The moderator can switch an active conversation to private mode, i.e. the moderator speaks to one participant privately. The remaining participants are unable to listen in. To do so, the moderator presses the Talk button (o) once. If the moderator would like to end the private mode, he/she briefly presses the Talk button (o) twice.

Key Lock

From software version 01.40 a keylock function is available.



By pressing the (o) button three times (short press) it is activated or deactivated.



If keylock is active LED light blinks purple.

Mute Moderator

As a Moderator you can mute yourself independent from the current connection mode. The continuous transmission can be interrupted by doing a long press on the minus (-) or the plus (+) button or the mic button until the audio signal “mute on” is heard.

While the moderator is muted a reminder signal rings out regularly if a participant tries to establish a connection with the moderator.

By pressing the minus (-) or plus (+) button you get back to the previous connection mode.



In participant mode as well as private mode, the individual conversation can only be interrupted after 10 seconds. By pressing the Talk button (o), another participant may speak and the other participants can listen (see participant mode).

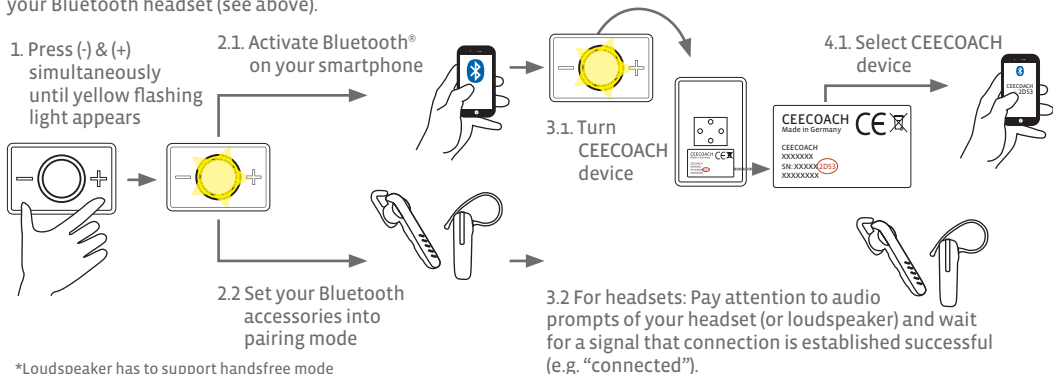
Connection to Bluetooth accessories (e.g. headset)

Connect a smartphone:

Set the device into pairing mode by pressing the Plus (+) and the Minus (-) button simultaneously. Activate Bluetooth® on your smartphone and scan for Bluetooth devices. The device is shown on the mobile phone as CEECOACH incl. the last 4 characters of the serial number, which can be found on the back side of the device. Click or tap the device to establish a connection. An incoming call is announced by CEECOACH and accepted by pressing the Talk button (o) once. Double clicking the Talk button (o) terminates the call. Pressing the Talk button (o) again puts the device back into participant mode. If you do not wish to accept a call, click the Talk button (o) twice - and the participant mode will be retained.

CEEEOACH 2 only: Connect Bluetooth headset or loudspeaker

Attention: As long as no Bluetooth headset is paired you can hear audio prompts from CEEEOACH through the provided corded headset only. Set your CEEEOACH and your headset (or loudspeaker) into pairing mode. Please consider manuals and audio prompts of your respective devices. Recommended and tested headsets are offered on our online-shop www.ceecoach-onlineshop.de. Further, you can use all headsets supporting the "Bluetooth® Headset Profile". However, we cannot guarantee faultless functioning with all headsets. With CEEEOACH 2 you can pair a smartphone in addition to your Bluetooth headset (see above).



*Loudspeaker has to support handsfree mode

Function table

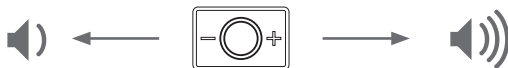
Activate (o)	(o) 1 second
Deactivate	(o) > 3 seconds
Volume:	Increase volume (+) Decrease volume: (-)
Establish connection e.g.: -Participant: Right to speak -Accept telephone calls	(o) Press once
Disconnect e.g.: -Moderator: End participant mode -End or reject telephone calls	(o) Press twice
Connection with Bluetooth accessories	(-) & (+) simultaneously, 2 seconds
Reset to factory settings	(+), (o) & (-) simultaneously, 2 seconds
Role assignment: Moderator	(+) & (o) simultaneously, 2 seconds
Role assignment: Participant	(-) & (o) simultaneously, 2 seconds

Range

The maximum range of 500 m (1600 ft) is reached when line of sight is given. If a participant is out of range, two short deep tones will be played. Once the participant is back in range, the participant hears a deep tone followed by a high one.

Adjusting the volume

Please adjust the volume by pressing the (+) or (-) buttons several times until you have set the desired volume.



Reset

If you would like to reset your CEECOACH device to factory settings, press all three buttons (-), (o) and (+) until the devices switches off. During this process, the light ring briefly flashes red and then white again (factory settings).



Technical features

Number of users	up to 6 people simultaneously
Dimensions (WxHxD)	75 X 50 X 24 mm (2.95 x 2 x 0.95 inches)
Mount	clip that snaps in 90° levels
Illumination	multi-colored LEDs
Talk time	up to 10 hours*
Stand-by time	up to 3 days*
Operating temperature	-10°C to 45° C (14°F to 113°F)
Storage	-20°C to 60°C (-4°F to 140°F)
Protection class	splash-proof, dust-proof, shock-proof
Range	up to 500 m (1600 ft)**
Data transfer	Bluetooth® 4.0
Power supply	Lithium-ion battery
Charging time	max. 4 hours*
Headset connection	3.5 mm jack plug
Charger connection	standard micro-USB

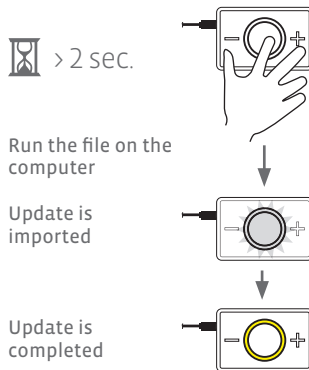
* Deviations possible depending on method of use.

** Maximum range is reached when visual contact is given.

Update function

Updates are used to keep CEECOACH functions current and up to date. The latest software version can be downloaded at www.ceecoach.com at any time. Use the USB cable included in the delivery to connect your CEECOACH device to a computer to which you have downloaded the update and press all three buttons (+), (o) and (-) simultaneously for more than 2 seconds.

Now, run the file on your computer. The light ring flashes white while the update is being imported and yellow when it is done. Please consider indications given onscreen. Then you can safely disconnect the device. Our website contains further information on the update procedure.



Information



Bluetooth®

CEECOACH transmits close-range signals in the license-free ISM band (2.4 GHz/Bluetooth®). The maximum range depends on various factors and operating modes (direct view, no antenna coverage, etc.) Bluetooth® is a registered trademark of Bluetooth® SIG Inc.

Radio contact

Although Bluetooth® is designed to establish stable connections at short range, like with any radio technology, interruptions are possible. Connections can malfunction, be faulty or even shut down entirely. Particularly if several devices are operated in a Bluetooth® network, faultless connections cannot be ensured in all situations.

Health notice

According to current knowledge, there is no indication that the use of Bluetooth® devices has any negative effects on humans. The transmission power of the CEECOACH communication system is max. 100mW. In comparison: the transmission power of a mobile phone is 2W. The ISM frequency range used by Bluetooth® has been classified as uncritical in terms of potential health risks for worldwide use in the fields of industry, science and medical technology.

Avoiding hearing damage

To prevent damage to hearing, the device should not be applied at high volumes over longer periods of time. Reduce the volume when using a headset if you cannot hear the voices of the people in your direct vicinity or when people next to you hear echo from your headset. Store CEECOACH with all its accessories in a secure place and keep out of reach of children and animals. The device contains small parts that can be swallowed or inhaled.



Secure temperature range

- Use CEECOACH at ambient temperatures between -10 °C and 45 °C (14°F to 113°F).
- Protect batteries and chargers against damage.
- Protect batteries against extreme cold and heat. Extreme temperatures may impair the charging capacity and service life of your batteries.
- Batteries should not come into contact with metal objects as this may cause them to short circuit, which in turn damages the battery temporarily or even permanently.
- Never make use of damaged batteries or chargers.

Battery care

The CEECOACH communication system is equipped with a Li-Ion battery with an overall capacity of 530mAh. Li-Ion batteries do not have a memory effect, which means they can be recharged at all times. The charging technology prevents the batteries from being overcharged. Once the battery is charged, its mode switches to charge conservation. To ensure that the battery retains maximum capacity, it should be fully charged at least 20 times and then be discharged again. The average charging time of an empty battery is max. 4 hours. A charged battery allows for talk times of up to 10 hours depending on operating mode. When not in use, CEECOACH should be recharged once every 3 months. The battery is equipped for 400 charging cycles at min. 80 percent charging capacity.

Improper charging

This can damage the battery:

- When charging the battery, only use the charging cable provided in the delivery.
- Immediately discontinue use if the product overheats, the charging cable is damaged or the product itself is damaged.
- Immediately discontinue use if the product or the charging cable comes into contact with liquid.
- Never charge a battery in an environment in which the temperature can fall to below 0°C (32°F) or rise above + 45°C (113°F).
- Never charge batteries unsupervised.

Power supply warning

Caution electric shock/fire hazard. For indoor use only. Do not expose to moisture, liquid or heat. Only use the power supply provided in package content for charging your CEECOACH.

Disposal of the product

If you would like to dispose of your communication system at a later time, please observe the following:

- This product is subject to European regulation 2002/96/EC.
- All electric and electronic appliances must be disposed of separately from normal household waste and taken to state or municipal-approved disposal center for this purpose.
- Proper disposal of used appliances prevents potential damages to humans and the environment.
- Detailed information on the disposal of used appliances can be obtained from local authorities, disposal centers and the specialist dealership from which you have purchased the device.



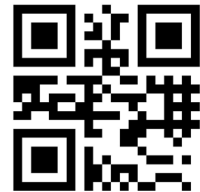
Currentness

Our high level of safety and quality is ensured by the constant further development of our products. This may result in deviations between this instruction manual and the device and accessories you have purchased.

Errors can also not be fully excluded. Please understand that no claims can be made on the basis of information, illustration and descriptions.

We reserve the right to make changes and updates to all performance features and specifications unannounced.

CEE | COACH®
smartly connected



PEIKER | CEE

peiker Consumer Electronics Evolution GmbH
Gartenstraße 25 · 61352 Bad Homburg · Germany
www.peiker-cee.de

www.ceecoach.de
www.ceecoach-onlineshop.de