

Guide Update CEECOACH

Installation of CEECOACH Update program

For updating CEECOACH you need a program which can be downloaded from our website www.ceecoach.com.

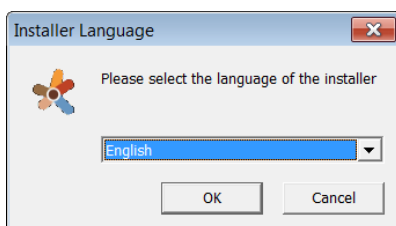
The installation program is running on Windows XP, 7, 8 und 8.1. According to your operating system (32 or 64bit) respective drivers are installed automatically.



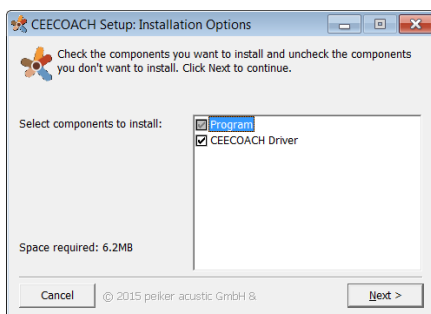
You need admin rights to install the necessary drivers.

After downloading the installation program *CEECOACH_Install* open the download history of your browser (keys: CTRL J) and start it with a double click.

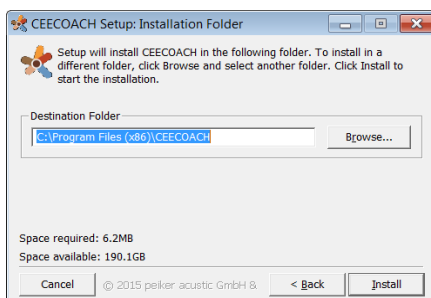
Then you can choose the language here:



For the first installation both components are required:



Save the program at your desired location:



By clicking on "INSTALL" the installation is started.
After the setup is completed, please click on "Close".

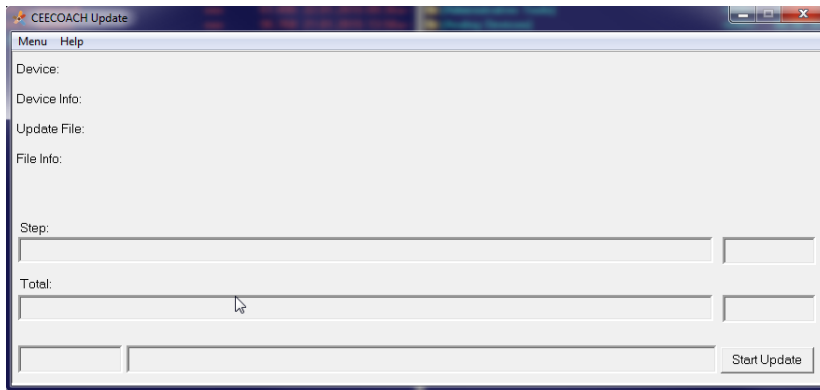
Update CEECOACH

Plug CEECOACH into your PC by using the provided USB cable and bring the device into the update mode. Press all three buttons (+,-, talk button) simultaneously until CEECOACH blinks red. Then you can release all buttons. The device blinks white (after 1-2 sec.).

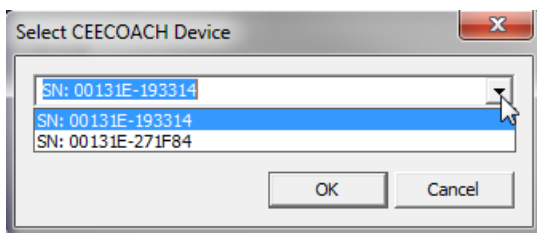
Now you can start the update program.

Open the start menu of your PC, click on "all programs" and choose "CEECOACH". In the menu, select "CEECOACH Update" to run the program.

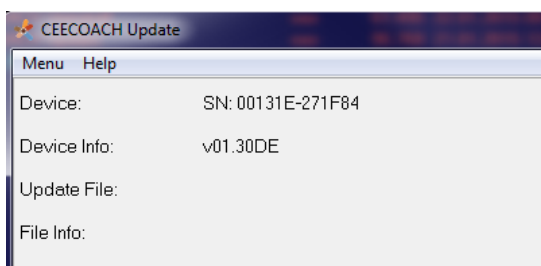
After this the following window appears:



Go to "Menu", click on "Select CEECOACH Device". In case you have plugged in more than one device a list box appears. The serial number (SN) can be found on the badge on the back of each device.



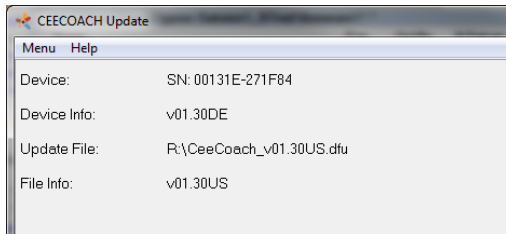
The field "Device Info" shows the installed software version, incl. language. Here: v01.30DE



To start the Update click on "Menu" again and choose "Select Update File". Open the file in your chosen



location. Now press "Start Update". You can see the progress of installation on your screen. After a successful update the new software version is shown under "File Info". Here: v01.30US



It is recommended to have the same software version on all your devices.